

BATICONNECT® CLOUD PROXIMITY KEY ANTI-CLONE PROTECTION



KEEP OUT OF MY BUILDINGS!

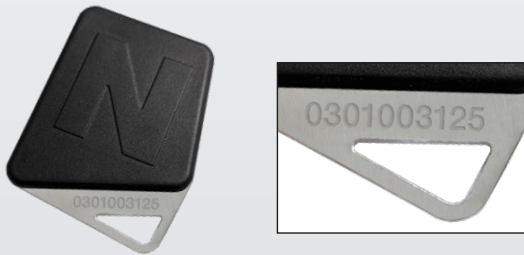
You are back in control



ANTI-CLONE PROTECTION

for KCP8 proximity keys / TELP8 radio transmitters

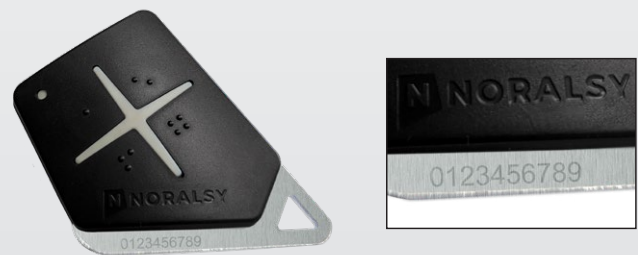
KCP4V Proximity Keyfob for residents



KCP8

- KCP8 proximity keys are each **engraved with a unique 10 digit ID number**.
- They are also **sequentially numbered** for ease of administration control and security.

Radio Transmitter for motorists



TELP8

- TELP8 radio transmitters are each **engraved with a unique 10 digit ID number**.
- They are also **sequentially numbered** for ease of administration control and security.

LEARN MORE
at www.ipdoorentry.co.uk



**ANTI-CLONE
PROTECTION**

Stop unauthorised access into your buildings to protect your residents



Anti-clone protection means that cloning the original proximity key – whether 1 or 100 clones – is pointless because only 1 no proximity key (might be the original or one of the clones) can ever work. BATICONNECT detects and records fraudulent cloning action and sends an alert to the management company specifying both the offending proximity key and flat number.

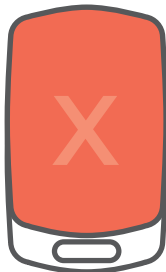
1

Resident makes an unauthorised copy

Resident now has two or more unauthorised copies of the original proximity key fob.



Original keyfob *



Unauthorised copy

* The original proximity key has its unique ID number engraved on it.

2

Resident tries to use the unauthorised copy

Each proximity key fob has its own unique number. BATICONNECT® checks the usage history of the proximity key fob based on its unique number.

EXAMPLE

Resident has 5 no cloned proximity key fobs made by an unscrupulous company – so 6 no proximity key fobs (including original) all with the same valid ID number now exist.

They obviously cannot all have the same usage history so BATICONNECT® selects 1 no and blocks all the rest!

Building management have full control!

1

THE RESIDENT REPORTS

"My proximity key fob is not working!".



2

MANAGEMENT CHECKS ON THE BATICONNECT.COM PORTAL

Event log shows "SUSPECTED APASS FORGERY".

It is, of course, totally unacceptable that the safety of residents and the security of the building be jeopardised by a small minority of residents attempting to bypass the proximity access control system using fake cloned fobs.



3

WE INSTALLED BATICONNECT® SPECIFICALLY TO PROTECT RESIDENTS AND THE BUILDING!

"Do not try and use FAKE CLONED proximity keys. You are wasting your money because only 1no proximity key fob can ever work per ID number. Make sure you tell all the other residents!"



**ANTI-CLONE
PROTECTION**



24/7/365 REAL-TIME
CLOUD MANAGEMENT
baticonnect.com

How BATICONNECT® Anti-Clone works

1 Proximity key fob presented to proximity reader.

2 BATICONNECT® checks if it has a valid ID number.

3 BATICONNECT® checks if its usage history is valid.

4 BATICONNECT® will only grant access if both the ID number and usage history are valid. Any other proximity key fobs with the same ID number but a different usage history will be blocked!

THINK OF BATICONNECT® AS YOUR SAFETY CLOUD.

It makes sure only 1 no proximity key fob
can ever work per ID number.

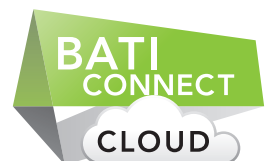
It also backs everything up, logs and monitors all events, and
regularly receives OS updates of new features and improvements.

It is the connectivity of the future.



08000 156496
sales@ipdooreentry.co.uk
www.ipdooreentry.co.uk
f ipdooreentry

IP Door Entry Limited
Unit DC4 Prologis Park
Eastman Way
Hemel Hempstead
HP2 7DU



24/7/365
www.baticonnect.com